

The visionaries

- Don Atkins
- Mark Nelson
- Brian Christianson

A photograph of a man with a beard, wearing a light-colored shirt, speaking at a wooden podium. He is holding a microphone and looking towards the audience.

Minnesota Erosion Control Assn

- The vision is to fill the gap where the International Erosion Control Assn leaves off..... Go to the people
- **From humble beginnings.....**



Andrew Lieser PhD at MECA

A photograph of a large audience of people seated in a conference room. They are facing forward, and the room has a stage area in the background.



Robin Sotir

Bioengineering Nine mile creek

At MECA... Lets take a break.

Vendors.... Get em to sponsor or donate some product....





Getting in the last word.....



Bob says native vegetation...
Earl says just sod it...



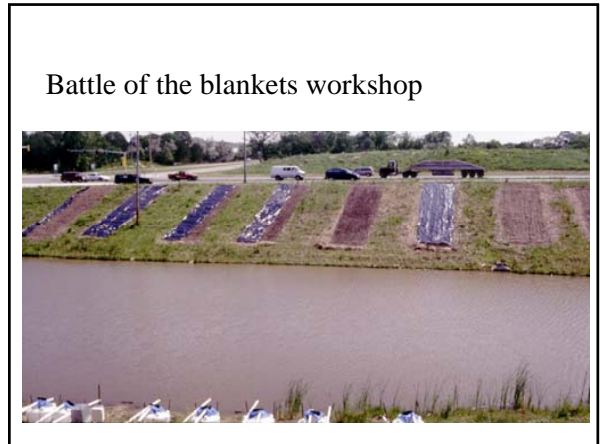
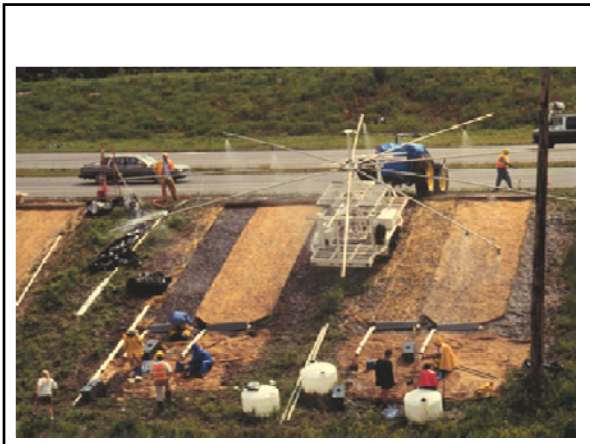
Bob says use a drill....
Earl says a hydro-seeder works better...



Meanwhile at MECA...
Dwayne says we need research...



Bruce Wilson PhD, University of Minnesota



Where the real learning takes place



State of the art temporary erosion control



Move to the present...
MECA Workshops



Temporary stabilization during construction to protect water resources





Some of the major players?

- Robert Kennedy Jr.
- Founder of the Water Keeper Alliance Org.
- Natural Resource Defense Council



AGC of America
THE ASSOCIATED GENERAL CONTRACTORS OF AMERICA
Quality People. Quality Projects.

Leah Pilconis
Environmental Council
for AGC

Jessie Pritts
Chief author of EPA general Permit



Jessie Pritts and Greg Schaner from EPA



University of Minnesota

Outdoor stream lab at St Anthony Falls



Erosion certification training program



This is the future.....

BioBrief

Department of BIOPRODUCTS AND BIOSYSTEMS ENGINEERING
UNIVERSITY OF MINNESOTA

THE NEWSLETTER // WINTER 2013

FOCUS ON: ENVIRONMENTAL AND ECOLOGICAL ENGINEERING

Making an impact



The future is the next generation....

BioBrief

IN THE FIELD

The student's field experience this fall was on the Cannon River. The purpose of the field trip was to give students hands on experience conducting a geomorphic assessment of the stability and streambank erosion rate of the Cannon River at a location near Cannon Falls.

IN THE CLASSROOM

"This course is unique in that it provides students with background on how to conduct water quality assessments. This is a very practical learning experience as this is the type of analysis conducted by consultants who do contracting on water quality projects."

—Professor John Bester

Lastly.. I said that my heaven has erosion and Rocky Waldin sent me this photo



