



SUMMER 2022 NEWSLETTER

Advancing Effective Stormwater Management & Erosion Control Practices



2023 ANNUAL CONFERENCE & TRADE SHOW

We look forward to seeing you at our 35th Annual Conference on January 24-26th at The Park Event Center in St. Cloud. Pre-conference workshops will be held on Tuesday, January 24th and the Conference will take place on

Wednesday and Thursday the 25th and 26th of January.

We are excited to return to our traditional Annual Conference and Trade Show format that allows for not only exceptional educational opportunities, but gives all of our attendees an opportunity for quality networking.

We have been working on finalizing topics/presenters and are excited to release the Annual Conference Schedule soon.

Located just off of Highway 75 (Division St) near the crossroads of MN-23 and MN-15, The Park Event Center is comprised of three buildings with enclosed direct access walkways to the [Residence Inn](#), the [Hilton Garden Inn](#), and [Maverick's Steak and Cocktails](#). Guests to The Park will enjoy modern amenities, friendly staff, and full access to incredible food & lodging that is all under one roof. A room block has been reserved for MECA guests that may be accessed from the hotel links above.

Registration is available for FULL CONFERENCE ATTENDEES ONLY at this time. Registration for Exhibitors, Speakers, Pre-Conference Attendees and One Day Attendees is coming soon!

REGISTER FOR
FULL CONFERENCE HERE



SUMMER 2022 NEWSLETTER



MESSAGE FROM MECA BOARD MEMBER GRAHAM MCFALL

I hope everyone is enjoying this summer and that your construction projects are now in full swing! Don't forget to take time for yourself, family and loved ones while we all navigate the busy construction season.

One of the many benefits of having a local organization like MECA, is the ability for current and past members to consistently engage with relevant learning opportunities and workshops. We're excited to share three upcoming events! First, we're partnering with Cass and Beltrami SWCDs for a bus tour of Shoreline and Watershed Best Practices on July 28th, 2022. We are also thrilled to announce a joint classroom and field event with the North American Stormwater and Erosion Control Association (NASECA) of Wisconsin on September 22nd, 2022. Lastly, registration will soon begin for the 2023 Annual MECA Conference. This year we'll be located in St. Cloud, MN and the dates are locked in for January 24th-26th, 2023. We're finalizing the topics and speakers as I write this email, and we have some fantastic presentations lined up. Watch for the Annual Conference registration email, coming soon!

As an administrative update, two of us will be stepping down from the MECA Board, effective immediately. We thank Joey Lundquist for her thoughtful contributions in her time serving alongside us and we wish her the very best at Ramsey County Public Works! As for me, I am moving out of state and want to make space for someone local to better serve our members. I personally want to thank the Board for this opportunity, but I also want to acknowledge each and every one of you for the amazing work and contributions you make in advancing our industry! Keri Aufdencamp (SEH and previous Board Member) and Jamie Dayton (Mortenson Construction) will fill the interim vacant positions until replacements are voted in at the 2023 and 2024 Annual Conferences.

From all of us at MECA we want to wish everyone a happy construction season, and be safe out there!

Thanks,
Graham McFall

MECA BOARD MEMBERS



PRESIDENT
Greg Berg



VICE PRESIDENT
Rebecca Forman



TREASURER
Jeff Forsberg



SECRETARY
Meghan Litsey



BOARD MEMBER
Jamie Dayton



BOARD MEMBER
Riley Stenzel



BOARD MEMBER
Keri Aufdencamp

BROCKWHITE

CONSTRUCTION MATERIALS

YOUR SOURCE FOR GEOSYNTHETICS

With over 30 years of knowledge and experience, Brock White is your source for geosynthetic products and services. We are proud to represent the top geosynthetic manufacturers in the market today and are here to offer you the technical and product support you need to get the job done.

**GEOGRIDS | GEOTEXTILES | EROSION CONTROL
SEDIMENT CONTROL | POROUS PAVING
PAVING FABRICS & GRIDS | GEOMEMBRANES/GCL'S
DRAINAGE MANAGEMENT | TECHNICAL SUPPORT**

EXPANDING OUR COVERAGE AREA IN 2022!



BROCKWHITE.COM

WELCOME INTERIM MECA BOARD MEMBERS!



Keri B. Aufdencamp has over 20 years of experience working for the MN Dept. of Transportation, M.A. Mortenson Company, and Short Elliott Hendrickson. Her environmental experience includes: SWPPP, environmental risks, soil and groundwater contamination, vapor intrusion, hazardous building materials, environmental compliance, wetlands, and endangered

species. Keri's willingness to think "outside the box" helps develop creative solutions to complex environmental issues.

Keri is a member of the International Erosion Control Association, MECA, MN Ground Water Association, and MN Brownfields. Keri is a Certified Professional in Erosion and Sediment Control and holds certifications through the U of M Erosion and Storm Water Management Certification Program. Keri has a Bachelor of Science degree in Geology and Earth Science from the University of Northern Iowa and has completed graduate work towards a Master's degree in Geology and Water Resources at Iowa State University.

She enjoys volunteering, baking, and reading.



Jamie Dayton is a stormwater compliance consultant who has completed over 15,000 construction stormwater (CSW) inspections. Jamie has also worked on dozens of CSW stormwater pollution prevention plan (SWPPP) designs, numerous Industrial SWPPP design and compliance management projects, as well as Municipal Separate Stormwater System

(MS4) compliance and inspections.

Jamie has assisted with projects as small as a single home construction stormwater plan to a nationally recognized wind farm project where he assisted in the design of the erosion and sediment control design for the multiyear construction project, with some paper mill and ethanol plant industrial permitting mixed in between.

Jamie has his Bachelor of Science degree in Environmental Studies from St. Cloud State University and is working towards earning his Certified Profession in Erosion and Sediment Control (CPESC) certification.

WE'VE GOT YOU COVERED.™

PREMIUM GRASS SEED

COMPLETE EROSION CONTROL PRODUCT LINEUP

TEAM OF SPECIALISTS TO ENSURE YOUR SUCCESS

AS FAST AS YOU NEED IT GUARANTEE


MillbornSeeds

888.498.7333 • MILLBORNSEEDS.COM

MEMBER OF MECA AND MINNESOTA SEEDERS ASSOCIATION
HELPING YOU IMPACT ACRES SINCE 1987!

PROUD TO OFFER PRODUCTS FROM:

American
Excelsior
Company®



Quality Erosion Control Products



DID YOU KNOW



INSPECTIONS ARE REQUIRED EVERY
7 DAYS AND WITHIN 24 HOURS
AFTER A 1/2 INCH RAINFALL

LEARN MORE
THROUGH **ONLINE** AND
IN-PERSON CLASSES

➔ **REGISTER**
at erosion.umn.edu



Erosion & Stormwater
Management Certification Program



 UNIVERSITY OF MINNESOTA
Driven to Discover®

NEW CLASSES!
INDUSTRIAL AND
MUNICIPAL
STORMWATER



SCAN ME
Learn More About
LSC Environmental Products

Solutions for the Greener Good



Mat, Inc., Now Part of LSC Environmental Products

Real challenges require real solutions.

WE DELIVER.

From shoreline restoration to streambank stabilization, Bolton & Menk turns complex water resources projects into innovative and customized engineering solutions.

River Park Drive Erosion Control, Mankato Township



BOLTON & MENK
Real People. Real Solutions.



www.LSCenv.com

Bolton-Menk.com

SALT SYMPOSIUM 2022

Stay Current in the Chloride Conversation Livestream - August 2nd & 3rd

MECA is a proud sponsor and supporter of the
2022 Salt Symposium.

If you're ready to expand your understanding of the chloride
problem, [join us](#) in learning from experts across the country on
how we can all contribute to a lower chloride future!

[SIGN UP](#)



CONTACT US

ROBERTA RINGSTAD
ADMINISTRATOR
7113 COUNTY ROAD 5
RICE, MN 56367
(320) 685-5444 - PHONE
MECA@MNEROSION.ORG
MNEROSION.ORG



Wellens Agronomics

Carver, MN

952-448-5167

www.wellensag.com

Seeding and Erosion Control Contractor

The area's most reliable partner, focused on
quality and service second to none.

SHORELINE & WATERSHED PRACTICES TOUR

CASS & BELTRAMI COUNTIES
JULY 28th, 8AM-3:45PM



MECA is excited to partner with Cass SWCD and Beltrami SWCD for a bus tour of Shoreline and Watershed Practices. We will board the bus at the Chase on the Lake parking lot in Walker and make our way to Bemidji and back visiting 8 sites.

Featured Practices:

- Stormwater Defender
- Stormwater Catchment
- Innovative Rock Arch Rapids
- Dam removal
- Water and Sediment Basins
- Retrofit Rain Garden
- Iron-Enhanced Sand Filter
- Shoreline Restoration, Native Plantings
- Bio-engineered Shoreline
- Use of Erosion & Sediment Control/Stormwater products
- Emergency Stop Gate
- Enhanced Aquatic Organism Passage

Refreshments & Lunch are included!

\$75 Current MECA Members \$125 Non-Member

REGISTER BY JULY 7TH

RICE LAKE FIELD EVENT

Best Management Practices & Product Demonstrations for Erosion Control & Stormwater Management



American Excelsior Company ErosionLab | Rice Lake, WI

MECA is excited to have the opportunity to partner with NASECA for this year's Rice Lake Field Event!

This popular annual event has been hosted by NASECA since 2005 in partnership with the American Excelsior Company ErosionLab, one of only a few erosion control testing laboratories in the U.S. This event allows attendees to learn from experienced professionals in the morning session and view product testing under a variety of control measures set up as stations around the facility during the afternoon field session.

WELCOME RECEPTION

Wednesday, September 21st, 2022
5:00-8:00PM
Holiday Inn Express and Suites, Rice Lake, WI
Welcome Reception: \$20

FIELD EVENT

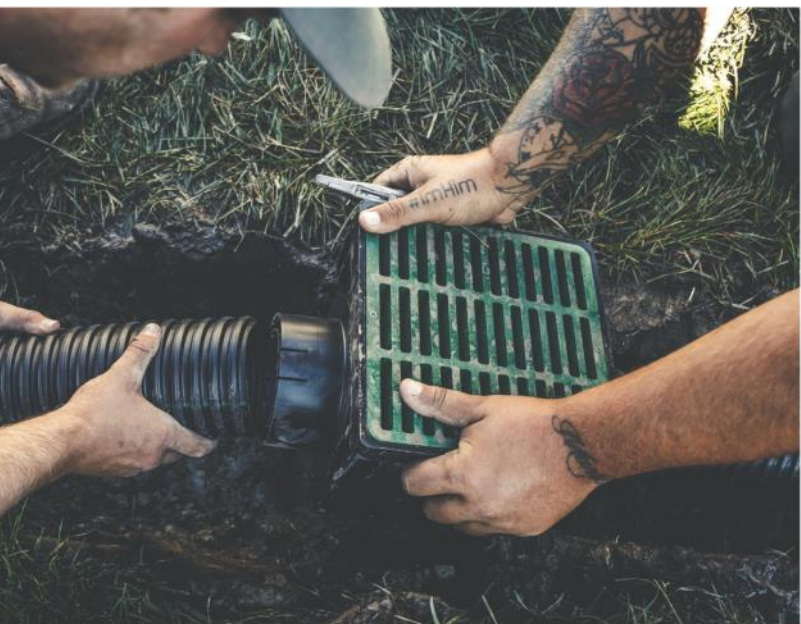
Thursday, September 22, 2022
8:00AM-4:00PM
American Excelsior Company ErosionLab
1695 19 1/2 Street
Rice Lake, WI 54868
Field Event: \$189 MECA member/\$209 non-member

REGISTER NOW!



• THE PROS OF BEING A PRO •

GROUND CONTROL



SiteOne® is home to an unmatched selection of erosion control solutions, and our green industry experts are your resource to help put them to good use.



To find a branch near you, visit [SiteOne.com/Locations](https://www.siteone.com/locations)



Get The **RIGHT MIX**

- MN DOT, ND DOT, SD DOT, WI DOT, IA DOT & NE DOT SEED MIXES
- HYDRO MULCH
- SILT FENCE
- EROSION CONTROL BLANKET & TURF REINFORCEMENT MAT
- FERTILIZER (CONVENTIONAL AND ORGANIC)
- INLET PROTECTION
- DEWATERING BAGS & FLOCCULANTS
- T-POSTS, STAPLES & ZIP TIES



agassizseed.com

WEST FARGO, ND

445 7th St NW
Phone: (701) 282-8118

MANDAN, ND

2813 Twin City Drive
Phone: (701) 354-5551

EAGAN, MN

3660 Kennebec Drive
Phone: (651) 287-3400

BRANDON, SD

1800 N. Walnut Avenue
Phone: (605) 789-4775



Complete ecological solutions

- > Native plants and seed mixes
- > Construction and installation
- > Stream and shoreline restoration
- > Vegetation management
- > Conservation grazing
- > Prescribed burning



info@mnlcorp.com ☎ mnlcorp.com



CONTACT US

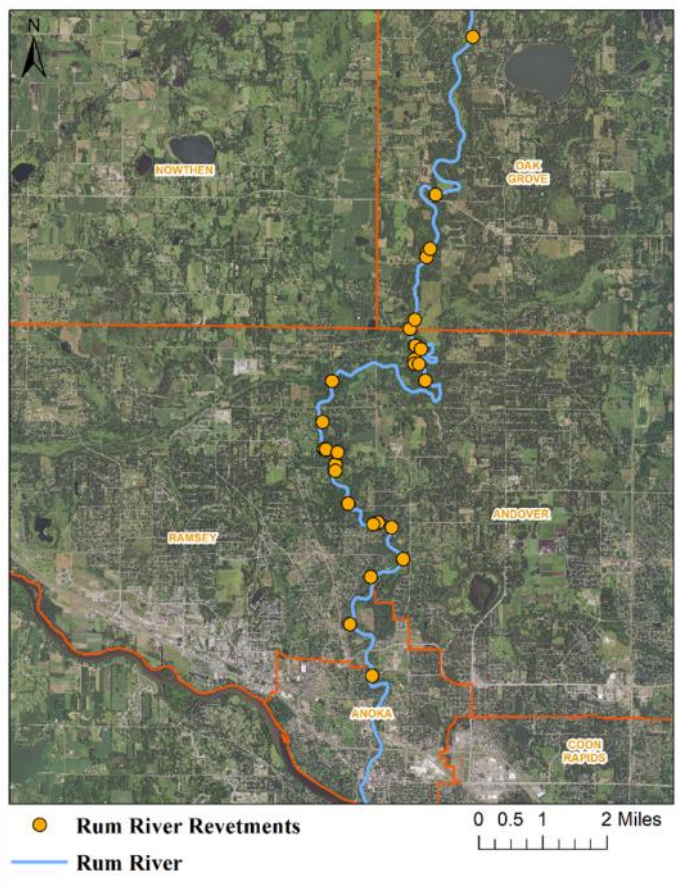
ROBERTA RINGSTAD
ADMINISTRATOR
7113 COUNTY ROAD 5
RICE, MN 56367
(320) 685-5444 - PHONE
MECA@MNEROSION.ORG
MNEROSION.ORG



PROJECT HIGHLIGHT

SIMPLE EROSION CONTROL TECHNIQUES BRINGS SUCCESS ON THE RUM RIVER

Submitted by: Kris Larson | Water Resource Technician, Anoka Conservation District



Cedar tree revetments are a cost-effective bioengineering practice that can be used to stabilize actively eroding riverbanks. Excessive erosion along riverbanks threatens property, contributes sediment and nutrients to the water, and eliminates wildlife habitat. Installation of cedar revetments and live stakes slows or stops the erosion and reduces the likelihood of a much larger and more expensive project in the future.

Eastern red cedars, though native to Minnesota, can be a nuisance species with a habit of taking over and dominating open grassy spaces. These cedar trees can be obtained at little to no cost through land clearing efforts and repurposed to protect streambanks and provide habitat benefit. Efforts made by Anoka Conservation District (ACD) throughout the last 10-years have resulted in large-scale pollution reduction and extensive land protection along the Scenic Rum River.

Since 2015, ACD has partnered with landowners, cities, parks departments, schools, and other community groups to install approximately 8,666 linear feet of cedar revetment. At the end of the 10-year project life, the current revetments in Anoka County will prevent in excess of 2,370 tons of sediment and 2,180 lbs. of phosphorus from entering the Rum River, based on loading estimates.

Funding for these project was made possible through the Conservation Partners Legacy, Conservation Corps of Minnesota & Iowa crew labor grants funded from the Clean Water, Land, and Legacy Amendment, and contributions from landowners. ACD provided all project administration, design and installation oversight.



Pre-project conditions consisted of an actively eroding riverbank and sparse understory vegetation. Bare soil and exposed tree roots were becoming clearly visible.



Cedar trees were tied together using cable and cable clips. The trees were then secured to the riverbank using a duckbill anchor with the trunks facing upstream to divert the flow of water away from the bank.



The cedar trees were anchored parallel to the shoreline and willow stakes were added between the trees. Willow stakes will grow and spread into a shrub grove to provide long lasting bank protection and habitat.